

DATED 6<sup>th</sup> June 2017

WILDLIFE AND COUNTRYSIDE ACT 1981

COUNTY OF DEVON DEFINITIVE MAP AND STATEMENT

DEVON COUNTY COUNCIL

(BRIDLEWAY NO. 48, EAST DOWN & BRIDLEWAY NO. 48, MARWOOD)

DEFINITIVE MAP MODIFICATION ORDER 2017

County Solicitor  
Devon County Council  
County Hall  
Exeter  
Devon  
EX2 4QD



WILDLIFE AND COUNTRYSIDE ACT 1981

COUNTY OF DEVON DEFINITIVE MAP AND STATEMENT

DEVON COUNTY COUNCIL

(BRIDLEWAY NO. 48, EAST DOWN & BRIDLEWAY NO. 48, MARWOOD)

DEFINITIVE MAP MODIFICATION ORDER 2017

**THIS ORDER** is made by Devon County Council under section 53(2)(b) of the Wildlife and Countryside Act 1981 ("the Act") because it appears to that authority that the County of Devon Definitive Map and Statement require modification in consequence of the occurrence of an event specified in section 53(3)(c) (i) namely: the discovery by the authority of the evidence which (when considered with all relevant evidence available to them) shows that a right of way which is not shown in the map and statement subsists or is reasonably alleged to subsist over land in the area to which the map relates, being a right of way such that the land over which the right subsists is a public bridleway.

The Authority has consulted with every local authority whose area includes the land to which the Order relates. The Devon County Council hereby order that:

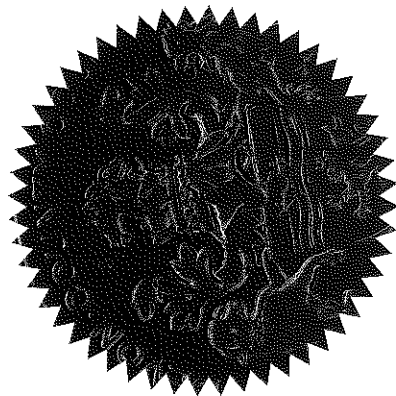
1. For the purposes of this Order the relevant date is 2<sup>nd</sup> March 2017.
2. The County of Devon Definitive Map and Statement shall be modified as described in Part I and Part II of the Schedule and shown on the map attached to the Order.
3. This Order shall take effect on the date it is confirmed and may be cited as the Devon County Council (Bridleway No. 48, East Down & Bridleway No. 48, Marwood) Definitive Map Modification Order 2017.

DATED this 6<sup>th</sup> day of June 2017

THE COMMON SEAL of the DEVON COUNTY )  
COUNCIL was hereunto affixed in the )  
presence of :- )

  
A Duly Authorised Officer  
CARL MEAGER

DOCUMENT No. 48159 .....



## SCHEDULE

### PART I

#### MODIFICATION OF DEFINITIVE MAP

##### DESCRIPTION OF PUBLIC RIGHT OF WAY TO BE ADDED

###### **Bridleway No. 48, East Down**

The bridleway to be added is situated in the administrative district of North Devon and civil parish of East Down.

This is a Bridleway. It starts at point A (GR SS 5755 4082) as shown on Drawing No. HIW/PROW/17/32 attached, at the junction of the county roads at Bowden Corner, and proceeds in a generally westerly direction along a hedged lane, with an earth, stone and grass surface for approximately 60 metres to point B (GR SS 5739 4084) at the parish boundary where it continues as Bridleway No. 48, Marwood. It is shown as a broken line with cross bars in the intervals.

###### **Bridleway No. 48, Marwood**

The bridleway to be added is situated in the administrative district of North Devon and civil parish of Marwood.

This is a Bridleway. It starts at point B (GR SS 5739 4084) at the parish boundary at its junction with Bridleway No. 48, East Down, and proceeds in a generally westerly direction along a hedged lane with a earth, stone and grass surface before opening up at point C (GR SS 5691 4085) to meet the Honeywell Farm access road at point D (GR SS 5686 4086). It continues as a single hedged lane to point E at its junction with the county road, Whitefield Hill, (for about 660 metres), southwest of Hewish Down Beacon, (GR SS 5674 4091). It is shown as a broken line with cross bars in the intervals.

## PART II

### MODIFICATION OF DEFINITIVE STATEMENT

#### VARIATION OF PARTICULARS OF PUBLIC RIGHTS OF WAY

**Bridleway No. 48, East Down**

**From: County roads at Bowden Corner**

**To: Bridleway No. 48, Marwood at the parish boundary**

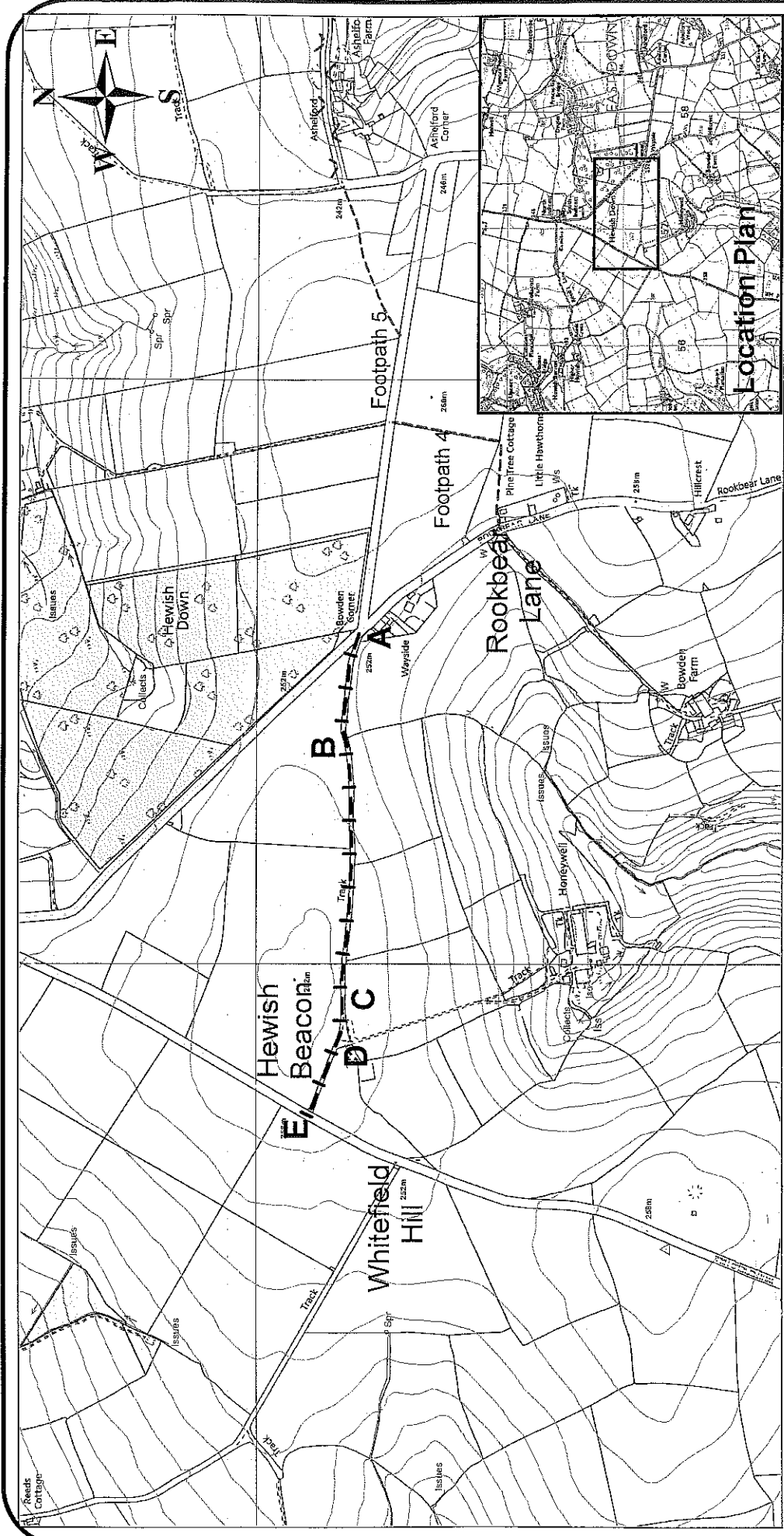
This is a Bridleway. It starts at the junction of the county roads at Bowden Corner at the southeast corner of Hewish Down and proceeds in a generally westerly direction along a lane enclosed by hedges on both sides, for about 175 metres to the parish boundary where it continues as Bridleway No. 48, Marwood. The width of the way is generally defined by the hedge banks on either side, and varies between 6.3 metres and 8.0 metres, widening to an undefined 15 metres at the junction splay at Bowden Corner. It has an earth, stone and grass surface.

**Bridleway No. 48, Marwood**

**From: Bridleway No. 48 East Down at the parish boundary**

**To: County road, Whitefield Hill, southeast of Hewish Down Beacon**

This is a Bridleway. It starts at Bridleway No. 48, East Down at the parish boundary and proceeds in a westerly direction along a lane enclosed by hedges on both sides, for about 608 metres, to end at the county road, Whitefield Hill, southwest of Hewish Down Beacon. The width of the way is generally defined by the hedge banks on either side, and varies between 5.8 metres and 8.0 metres, widening to undefined 15 metres at the junction splay at Whitefield Hill. It has an earth, stone and grass surface.



map ref: SS 5640 & 5740

Based on Ordnance Survey mapping with the permission of the Controller of Her Majesty's Stationary Office © Crown copyright. Unauthorised reproduction infringes Crown copyright and may lead to prosecution or civil proceedings. Licence No. 100019783

**Devon County Council**  
**(Bridleway No. 48, East Down & Bridleway No. 48, Marwood)**  
**Definitive Map Modification Order 2017**

drawing number **HIW/PROW/17/32**  
 date **June 2017**  
 scale **1:10,000**  
 drawn by **CLG**

**Notation**

- Bridleway No. 48, East Down A - B (approx 60 m) -|-|-|-|-
- Bridleway No. 48, Marwood B - C - D - E (approx 660m) -|-|-|-|-
- Existing footpath ----- Existing byway <img alt="existing byway symbol" style="vertical-align: middle; height: 1em;"/>



**Meg Booth**  
 Acting Chief Officer  
 for Highways,  
 Infrastructure Development  
 & Waste

